


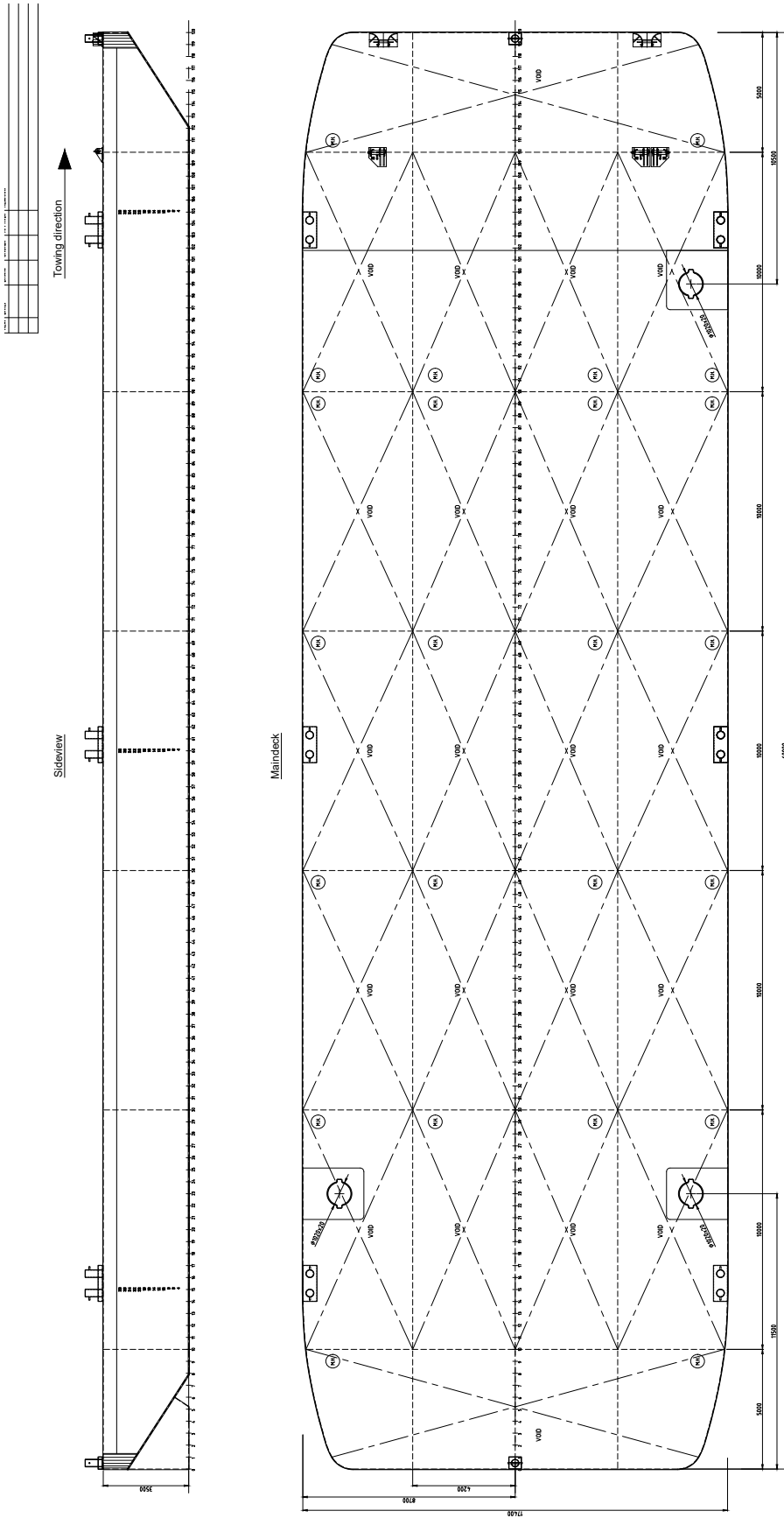
Neptune has got various vessels and pontoons available for sale or charter. To fulfil your operational demands, Neptune offers a wide range of deck equipment, including accommodation units, mooring equipment and cranes.

GENERAL	
IMO NR.	N/A
CALL SIGN	N/A
YEAR BUILT	2024
HOME PORT	Aalst
CLASSIFICATION	Bureau Veritas  HULL-pontoon Unrestricted Navigation Unmanned Towing

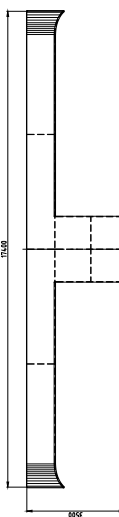
EuroPontoon 6018 | NP 646

DIMENSIONS		
LENGTH O.A.	60,00	meter
BREADTH MLD.	17,40	meter
DEPTH AT SIDE	3,50	meter
DRAUGHT MAX	2,72	meter
DRAUGHT MIN	0,60	meter
CAPACITY		
GROSS TONNAGE	936	ton
NET TONNAGE	280	ton
LIGHT SHIPWEIGHT	499	ton
CARGO CAPACITY	2226	ton
DECK LOAD	15	ton m ²
CONSTRUCTION		
DECK PLATE THICKNESS	12	mm
SHEERSTRAKE THICKNESS	25	mm
NUMBER OF COMPARTMENTS	22 void spaces	

STANDARD OUTFITTING	
BOLLARDS	6 x double bollards 2 x single bollards
MANHOLES	Flush type manholes
TOWING BRACKETS	3 x towing brackets at the bow SWL 120 T
FAIRLEADS	2 x pieces SWL 120 T
SPUD HOLE	1 x at PS side (Ø 914 mm spuds) 2x at SB side
OPTIONS	
TOWING ARRANGEMENT	Towing bridle with chains and emergency towing arrangement
DECK EQUIPMENT	Various of all kind and different deck equipment; cranes, winches, power-packs, accommodation units ect
SPUD POLES	Spuds with a diameter of 914 mm
SPUD HANDLING ARRANGEMENT	Spuds leg lifting cylinders, including stand diesel driven hydraulic power unit (HPU)
RO-RO RAMPS	Winch operated or hydraulic.
LADDERS	Boarding ladders



MAIN DIMENSIONS:
 LENGTH 60.00 m
 LENGTH RULE (97% WATERLINE LENGTH) 58.00m
 BREADTH MOULDED 17.40 m
 DEPTH MOULDED 3.50 m
 DRAFT (0.65XD) 2.975 m
TOWING CONDITION IN HEAVY WATER ONLY AT LOW SPEED
SPUD FOR MOORING PURPOSES ONLY
OPTIONAL SPUDS WITH A DIAMETER OF Ø914
BOLLARDS - 8x Double Bollards SWL 12 T
TOWING BRACKETS / FAIRLEAD SWL 120 T
CLASSIFICATION: Bureau Veritas Hull Pontoon Unrestricted Navigation, Unmanned Towing
 BV Registration Number: 451190
DECK LOAD: 15 ton/m²



NEPTUNE ENGINEERING
 RIVERBOLK 806 - 3371ED
 HARDINVELD-GIESSEIDAM Holland
 Tel: +31(0)184-621423 Fax: +31(0)184-612742

General Arrangement Pontoon 60 x17.4 x 3.5 - 15 T/m ² - 3 Spud	
Date: 25-09-2023 Scale: 1:80 Drawn by: NP646	Project: 646-0510 Checked by: FS Approved by: AT COMPANY RECORD ACC. NOL

EuroPontoon 6018 | NP 646

