



The EuroBackhoe is a heavy-duty dipper barge, set up for multi-functional applications, including maintenance dredging and land reclamation projects. The spud system is able to lift the barge 0,6-1,0 meters.

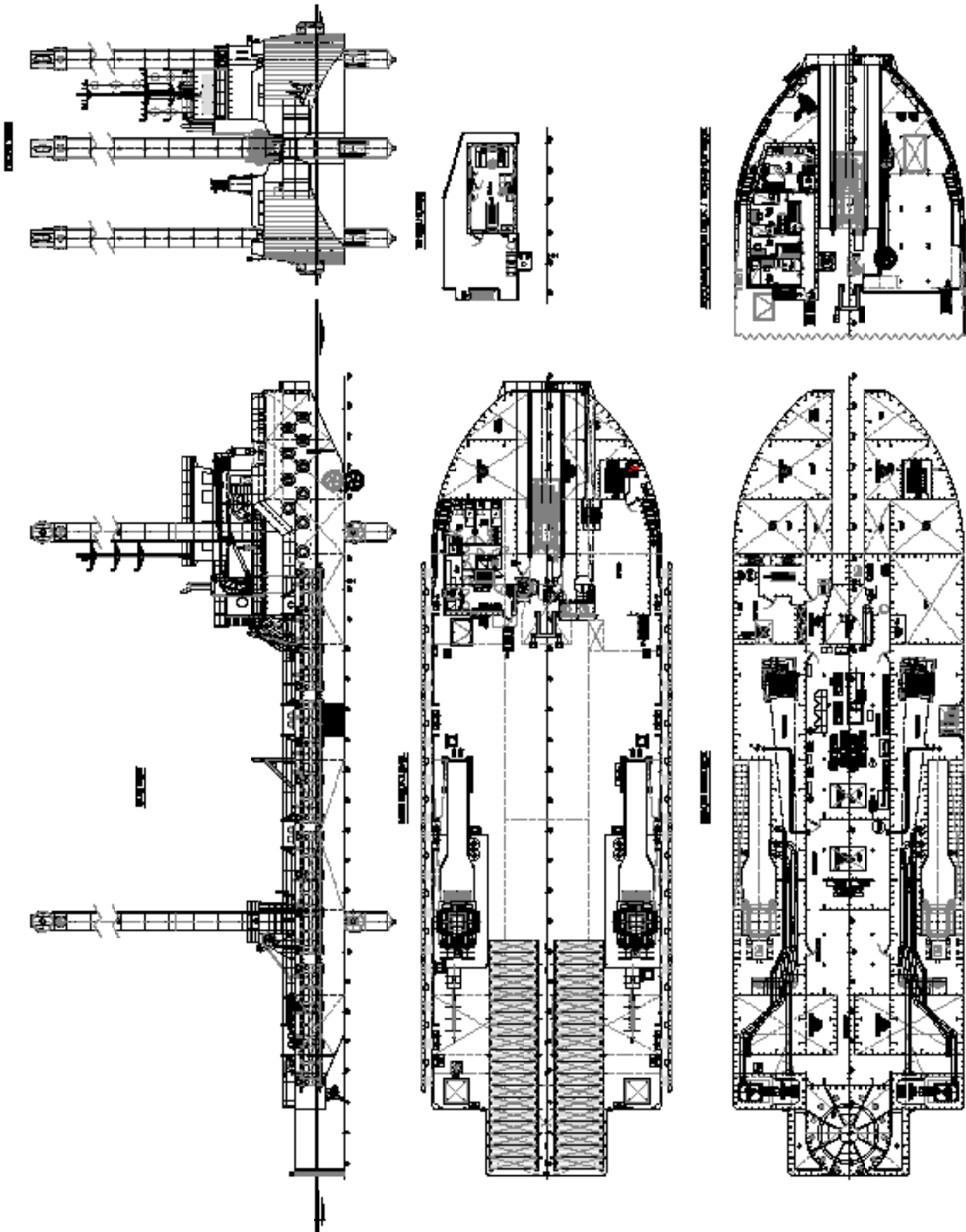


EuroBackhoe 6519 | Backhoe Dredger

GENERAL	
CLASSIFICATION	Bureau Veritas • Hull • Mach, Special Service / Dipperdredger, Assisted Propulsion, Unrestricted Navigation

DIMENSIONS	
LENGTH O.A.	65,0 meters
BREADTH MLD.	19,0 meters
DEPTH AT SIDE	4,0 meters
PROPULSION	
ASSISTING PROPULSION	2 x 350 kW (ZF HRP 4000) 1 x 525 kW (zf AT 4011)
GENERATORS	
690 V	Cummins KTA 50-D (M1) (1291 kW)
400 V	2 x Caterpillar 4.4 (168 kW)
HYDRAULICS	
TOTAL POWER	6 x 200 kW (electric driven)
ACCOMMODATION	
CABINS	Air-conditioned accommodation for 9 persons in 5 cabins
GALLEY/MESS	Galley/Mess for 7 persons

SPUD	
SPUD DIMENSIONS	1600 x 1600 mm (HT steel)
SPUD LENGTH	35 m
SPUD TILTING SYSTEM	Hydraulic cilinders
SPUD WINCH	
MAX. PUSHING FORCE	420 tons per spud
MAX. HOLD FORCE	840 tons per spud
SPUD CARRIER	
STROKE	10 m (winch operated)
OPTIONS	
CRAWLER EXCAVATOR	
TYPE	Hitachi 1900-6
OPERATING WEIGHT	275 tons
BUCKET	4-12 m ³
MAX. BOOM LENGTH	22,3 m
MAX. STICK LENGTH	16,5 m
OTHER CRANE TYPES	On request
DREDGING SOFTWARE	Teledyne PDS or equivalent
DECK CRANE	Fixed boom



EuroBackhoe 6519 | Backhoe Dredger

For more information, please contact us on:

T +31 (0)184 621 423 E info@neptunmarine.com W www.neptunmarine.com

Version: V.02

