




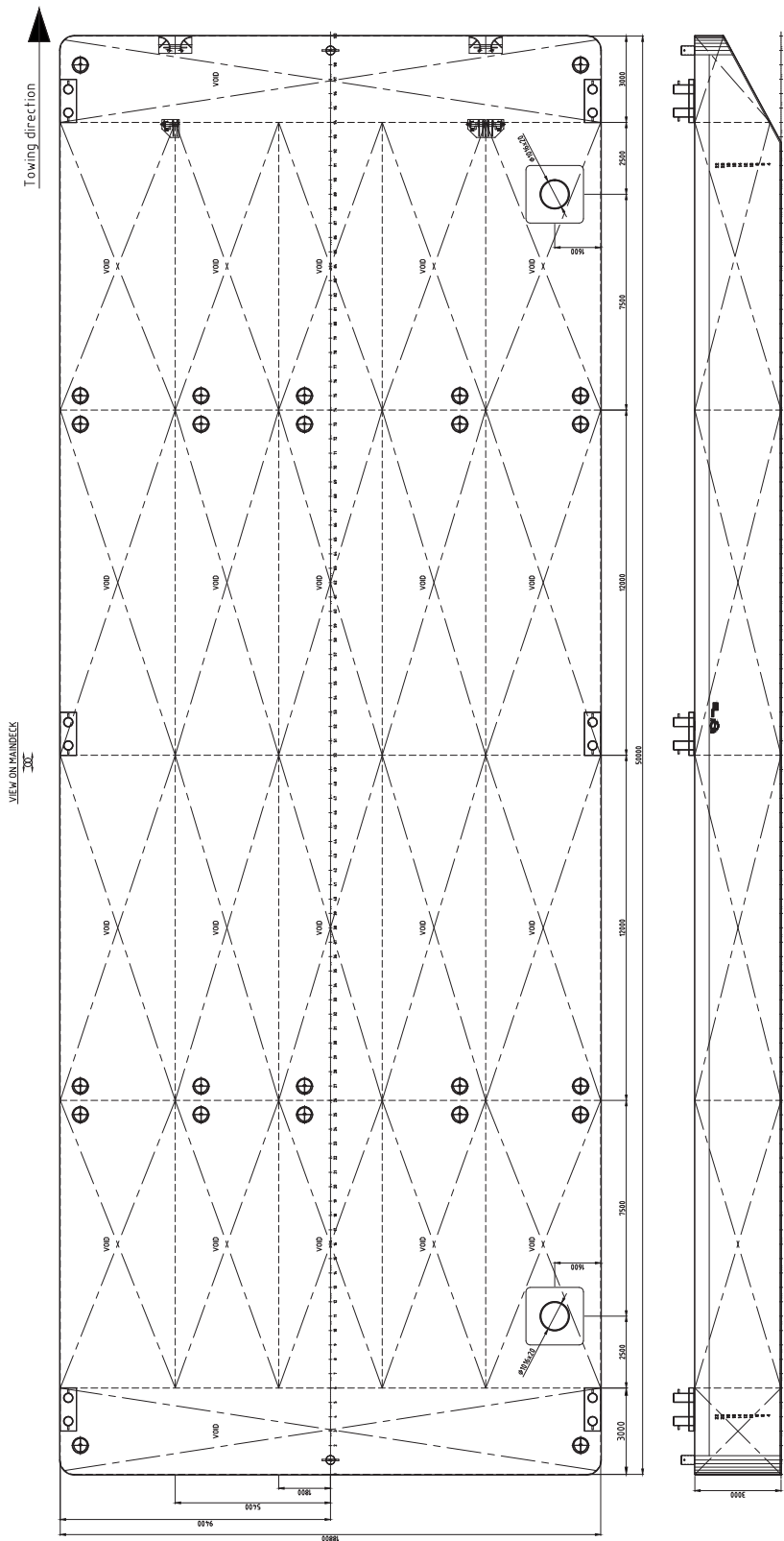
Neptune has got various vessels and pontoons available for sale or charter. To fulfil your operational demands, Neptune offers a wide range of deck equipment, including accommodation units, mooring equipment and cranes.

## EuroPontoon 5019 | NP 577

GENERAL	
IMO NR.	N/A
CALL SIGN	N/A
YEAR BUILT	2024
HOME PORT	Aalst
CLASSIFICATION	Bureau Veritas I  HULL • MACH Offshore Self Elevating Unit, Coastal Area, Transit over 20 miles from shore with HS < 2.5m

DIMENSIONS	
LENGTH O.A.	50,00 meter
BREADTH MLD.	18,80 meter
DEPTH AT SIDE	3,00 meter
DRAUGHT MAX	2,32 meter
DRAUGHT MIN	0,49 meter
CAPACITY	
GROSS TONNAGE	738 ton
NET TONNAGE	221 ton
LIGHT SHIP WEIGHT	Approx. 440 ton
CARGO CAPACITY	1802 ton
DECK LOAD	12 ton/m <sup>2</sup>
CONSTRUCTION	
DECK PLATE THICKNESS	12 mm
SHEERSTRAKE THICKNESS	25 mm
NUMBER OF COMPARTMENTS	22 void spaces

STANDARD OUTFITTING	
BOLLARDS	6 x double bollards 2 x single bollards
MANHOLES	Flush type manholes
TOWING BRACKETS	3 x SMIT brackets at the bow
FAIRLEADS	
SPUD HOLES	2 x at SB side (Ø 914 mm spuds)
BOARDING LADDERS	
EXTRA	
OPTIONS	
TOWING ARRANGEMENT	Towing bridle with chains and emergency towing arrangement
DECK EQUIPMENT	Various of all kind and different deck equipment; cranes, winches, power-packs, accommodation units ect
SPUD POLES	Spuds with a diameter of 914 mm
SPUD HANDLING ARRANGEMENT	Spuds leg lifting cylinders, including stand diesel driven hydraulic power unit (HPU)
RO-RO RAMPS	



## EuroPontoon 5019 | NP 577

For more information, please contact us on:

T +31 (0)184 621 423 E [info@neptunmarine.com](mailto:info@neptunmarine.com) W [www.neptunmarine.com](http://www.neptunmarine.com)

Version: V.02

