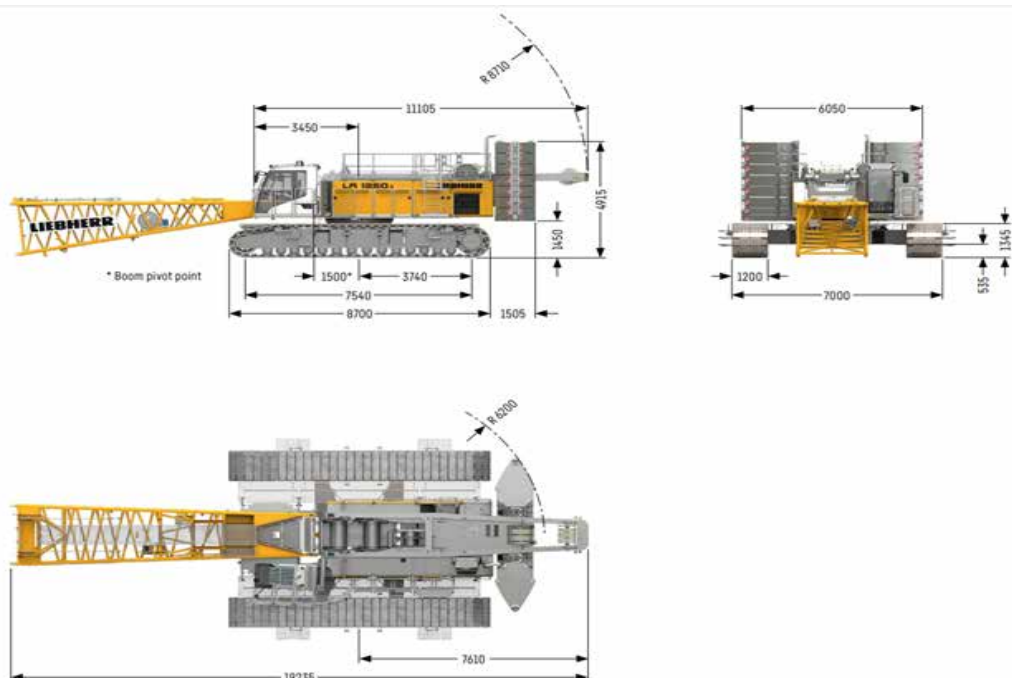




The LR 1250.1 convinces with high performance and very compact design. Lifting capacities up to 220 tonnes are possible thanks to its particularly solid boom and jib system. Neptune Marine offers turnkey crawler cranes, available for charter on various pontoons.

Liebherr LR 1250.1 | crawler crane

| INFORMATION | |
|----------------------|------------------------------------|
| BRAND | Liebherr |
| TYPE | LR 1250.1 |
| BOOM LENGTH | 20-62 meters |
| AUXILIARY JIB | Runner |
| WINCHES | 2x |
| LINE PULL | Max. 120 kN |
| ENGINE | Liebherr 230 kW, stage V + Tier 4F |
| OPERATING WEIGHT | Approx. 210 t |
| FEATURES | |
| A/C | Yes |
| SELF-ERECT | Yes |
| FREE-FALL ON WINCHES | No |
| CAMERA | Yes |
| TRACKS | Yes |



Load capacities with main boom

Load capacities in [t] with 82.3 t rear counterweight and 36 t carbody counterweight

| Radius [m] | Boom length [m] | | | | | | | | | | | | |
|------------|-----------------|-------|-------|-------|-------|-------|------|------|------|------|------|------|--|
| | 20 | 26 | 32 | 38 | 44 | 50 | 56 | 62 | 68 | 74 | 80 | 86 | |
| 5.8 | | | | | 122.1 | | | | | | | | |
| 6 | | | | 143.5 | 122.1 | | | | | | | | |
| 7 | | | 149.9 | 156.5 | 117.5 | 101.4 | 86.4 | 72.1 | | | | | |
| 8 | | 139.3 | 132.4 | 124.5 | 112.6 | 96.9 | 83.4 | 71.5 | 59.1 | 49.8 | | | |
| 9 | 129.7 | 122.7 | 115.9 | 109.6 | 103.9 | 93.0 | 80.4 | 68.1 | 57.7 | 49.5 | 41.2 | 34.0 | |
| 12 | 87.5 | 87.5 | 83.8 | 80.0 | 76.6 | 73.4 | 70.3 | 61.3 | 52.9 | 45.8 | 39.6 | 32.7 | |
| 18 | 50.0 | 50.0 | 49.9 | 49.6 | 49.1 | 47.3 | 45.6 | 43.9 | 42.3 | 38.7 | 34.4 | 29.2 | |
| 20 | 43.3 | 43.4 | 43.3 | 43.0 | 42.7 | 41.9 | 40.4 | 38.9 | 37.5 | 36.1 | 32.4 | 28.2 | |
| 22 | | 38.2 | 38.1 | 37.8 | 37.5 | 37.1 | 36.2 | 34.9 | 33.6 | 32.3 | 30.6 | 26.9 | |
| 28 | | | 27.4 | 27.1 | 26.8 | 26.4 | 26.1 | 25.7 | 24.9 | 23.9 | 22.9 | 21.9 | |
| 34 | | | | 20.5 | 20.3 | 19.9 | 19.5 | 19.1 | 18.7 | 18.2 | 17.4 | 16.5 | |
| 38 | | | | 17.3 | 17.1 | 16.7 | 16.4 | 15.9 | 15.5 | 15.1 | 14.7 | 13.8 | |
| 40 | | | | | 15.8 | 15.4 | 15.0 | 14.6 | 14.2 | 13.8 | 13.3 | 12.6 | |
| 44 | | | | | 13.4 | 13.1 | 12.8 | 12.4 | 12.0 | 11.6 | 11.2 | 10.6 | |
| 46 | | | | | | 12.1 | 11.9 | 11.4 | 11.0 | 10.6 | 10.2 | 9.7 | |
| 50 | | | | | | 10.4 | 10.2 | 9.7 | 9.3 | 8.9 | 8.5 | 8.0 | |
| 55 | | | | | | | 8.3 | 8.0 | 7.6 | 7.1 | 6.7 | 6.2 | |
| 60 | | | | | | | | 6.5 | 6.1 | 5.7 | 5.2 | 4.8 | |
| 65 | | | | | | | | | 4.8 | 4.4 | 4.0 | 3.5 | |
| 70 | | | | | | | | | | 3.3 | 2.9 | 2.5 | |
| 75 | | | | | | | | | | | 2.0 | | |

Load capacities in [t] with 72.3 t rear counterweight and 36 t carbody counterweight

| Radius [m] | Boom length [m] | | | | | | | | | | | | |
|------------|-----------------|-------|-------|-------|-------|-------|------|------|------|------|------|------|--|
| | 20 | 26 | 32 | 38 | 44 | 50 | 56 | 62 | 68 | 74 | 80 | 83 | |
| 4.1 | 219.1 | | | | | | | | | | | | |
| 5 | 216.9 | 199.9 | 173.7 | | | | | | | | | | |
| 6 | 194.3 | 180.1 | 165.5 | 143.5 | 122.1 | | | | | | | | |
| 7 | 164.9 | 152.4 | 141.7 | 132.2 | 117.5 | 101.4 | 86.4 | 72.1 | | | | | |
| 8 | 138.9 | 129.7 | 121.6 | 114.3 | 107.8 | 96.9 | 83.4 | 71.5 | 59.1 | 49.8 | | | |
| 10 | 104.8 | 99.5 | 94.4 | 89.6 | 85.3 | 81.2 | 77.1 | 65.7 | 56.0 | 48.1 | 40.7 | 36.9 | |
| 12 | 80.2 | 80.1 | 76.7 | 73.3 | 70.1 | 67.1 | 64.2 | 61.3 | 52.9 | 45.8 | 39.6 | 35.9 | |
| 14 | 64.5 | 64.5 | 64.4 | 61.7 | 59.2 | 56.8 | 54.6 | 52.4 | 50.0 | 43.2 | 37.6 | 34.3 | |
| 18 | 45.7 | 45.7 | 45.5 | 45.2 | 44.7 | 43.0 | 41.4 | 39.8 | 38.3 | 36.8 | 34.4 | 31.5 | |
| 22 | | 34.7 | 34.6 | 34.3 | 34.0 | 33.7 | 32.8 | 31.5 | 30.3 | 29.0 | 27.9 | 27.3 | |
| 26 | | 27.5 | 27.5 | 27.2 | 26.9 | 26.5 | 26.2 | 25.6 | 24.6 | 23.5 | 22.5 | 22.0 | |
| 30 | | | 22.4 | 22.2 | 21.9 | 21.5 | 21.1 | 20.7 | 20.3 | 19.3 | 18.4 | 18.0 | |
| 34 | | | | 18.4 | 18.1 | 17.7 | 17.4 | 17.0 | 16.6 | 16.1 | 15.2 | 14.8 | |
| 36 | | | | 16.8 | 16.6 | 16.2 | 15.8 | 15.4 | 15.0 | 14.6 | 13.9 | 13.5 | |
| 38 | | | | 15.4 | 15.2 | 14.8 | 14.5 | 14.1 | 13.7 | 13.2 | 12.7 | 12.3 | |
| 44 | | | | | 11.9 | 11.6 | 11.2 | 10.8 | 10.4 | 10.0 | 9.5 | 9.3 | |
| 50 | | | | | | 9.1 | 8.8 | 8.3 | 7.9 | 7.5 | 7.1 | 6.9 | |
| 55 | | | | | | | 7.1 | 6.7 | 6.3 | 5.9 | 5.4 | 5.2 | |
| 60 | | | | | | | | 5.3 | 4.9 | 4.5 | 4.1 | 3.9 | |
| 65 | | | | | | | | | 3.8 | 3.4 | 2.9 | 2.7 | |
| 70 | | | | | | | | | | 2.4 | | | |

Liebherr LR 1250.1 | Crawler crane

For more information, please contact us on:

T +31 (0)184 621 423 E info@neptunemarine.com W www.neptunemarine.com

Version: V.02

